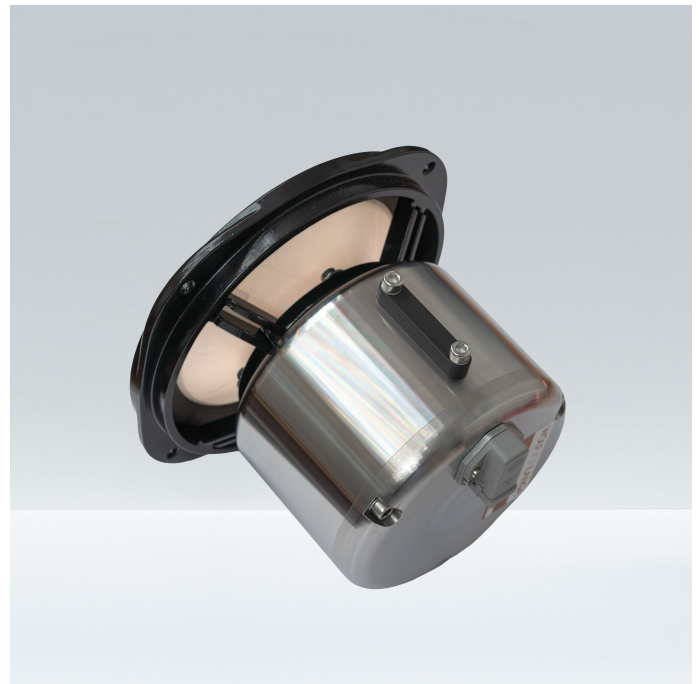
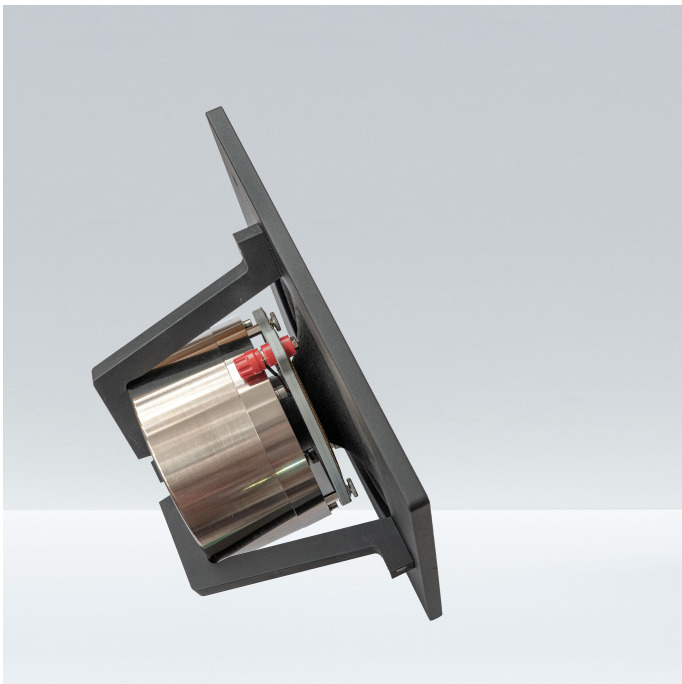


WVL AD-2544

UHQ Field-Coil-Compression-Drive
Recommended frequency range 800Hz and above
Power Capability about 50 watts after 12dB crossover
Field-Dissipation up to 30 watts
Metal waveguide adaptor for 1" or 1.4" recommended

WVL AD-5110

UHQ Field-Coil-Compression-Drive
Recommended frequency range 500 to 9000Hz
Power Capability about 80 watts after 12dB crossover
Field-Dissipation up to 35 watts
Metal waveguide adaptor for 2" recommended



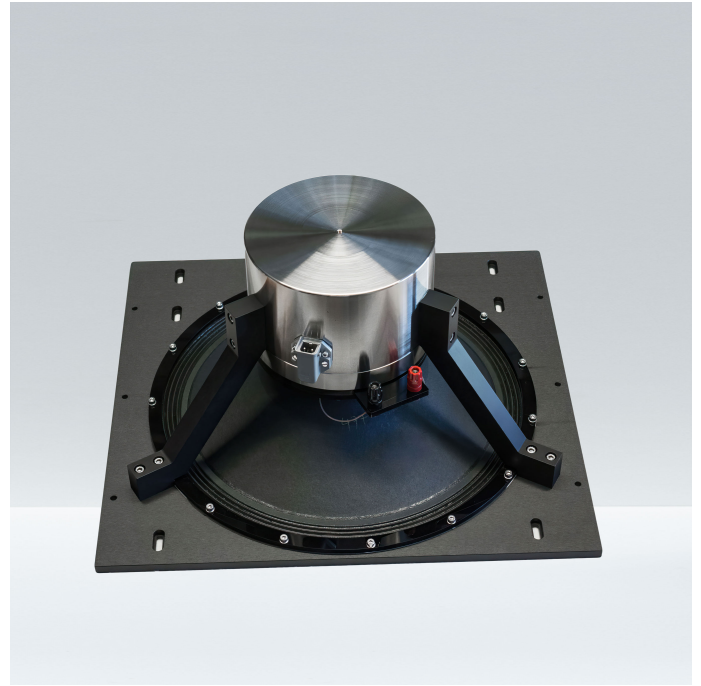
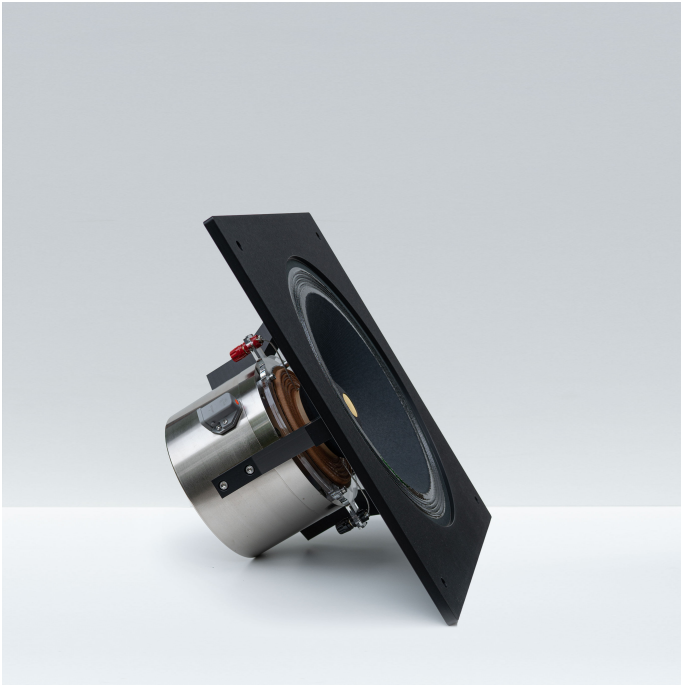
WVL AC-1650

UHQ Field-Coil-Midrange-Drive
Recommended frequency range 800 to 2500Hz
Power Capability about 50 watts after 12dB crossover
Field-Dissipation up to 30 watts
Square Frame dimensions 260 x 260mm

WVL AC-1638

UHQ Field-Coil-Fullrange-Drive
Recommended frequency range 80Hz and above
Power Capability about 50 watts
Field-Dissipation up to 30 watts
Lowther Cone Assembly recommended

Available through:
Christine von Langa - Rödlas 54 - 91077 Neunkirchen a.Br. - Germany
<https://wolfvonlanga.de> - info@wolfvonlanga.com

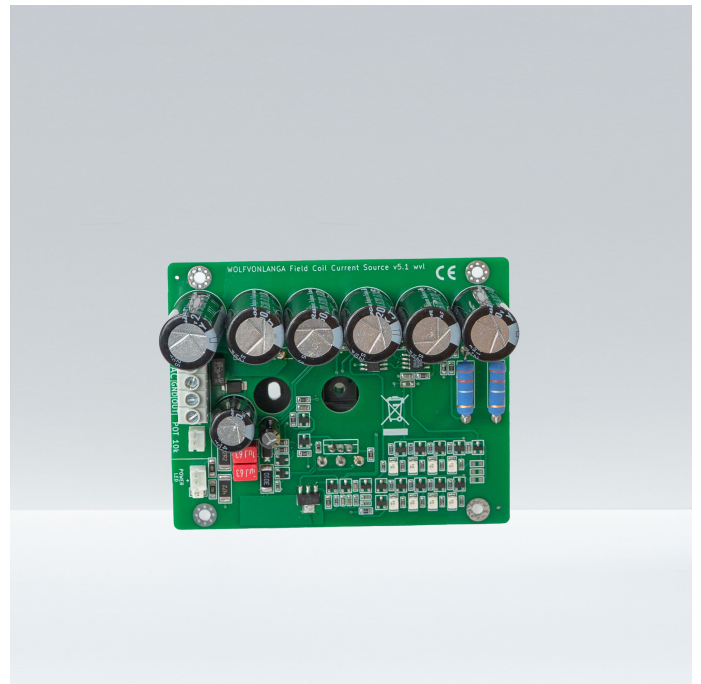


WVL AC-2676

UHQ Field-Coil-Bass-Midrange-Drive
 Recommended frequency range 28 to 3000Hz
 Power Capability about 100 watts
 Field-Dissipation up to 30 watts
 Square Frame dimensions 400 x 400mm

WVL AC-3276Q

UHQ Field-Coil-Bass-Midrange-Drive
 Recommended frequency range 20 to 3000Hz
 Power Capability about 100 watts
 Field-Dissipation up to 30 watts
 Square Frame dimensions 446 x 416mm



WVL AC-3276R

UHQ Field-Coil-Bass-Midrange-Drive
 Recommended frequency range 20 to 3000Hz
 Power Capability about 100 watts
 Field-Dissipation up to 30 watts
 Outer Frame dimensions \varnothing 422mm

WVL FCCS-5.1

UHQ Field-Coil-Current-Source
 Recommended Power Supply Module
 Current adjustable from 1.4 to 3.5ADC
 High-Quality-Transformer needed

Available through:
 Christine von Langa - Rödlas 54 - 91077 Neunkirchen a.Br. - Germany
<https://wolfvonlanga.de> - info@wolfvonlanga.com